

Where is Little Mouse?  
Please draw a line to the right answer.

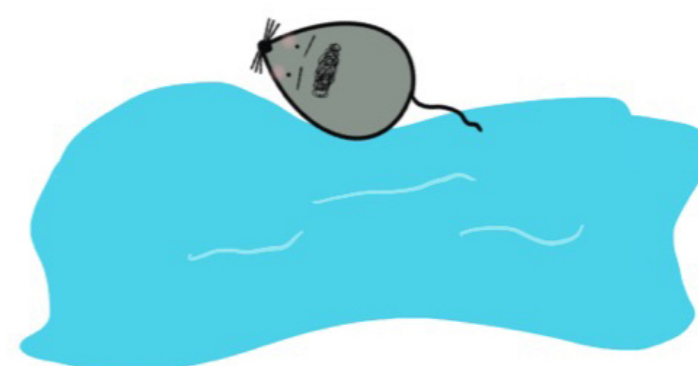
山<sup>尸、弓</sup>上<sup>尸、尤</sup>  
shān shàng



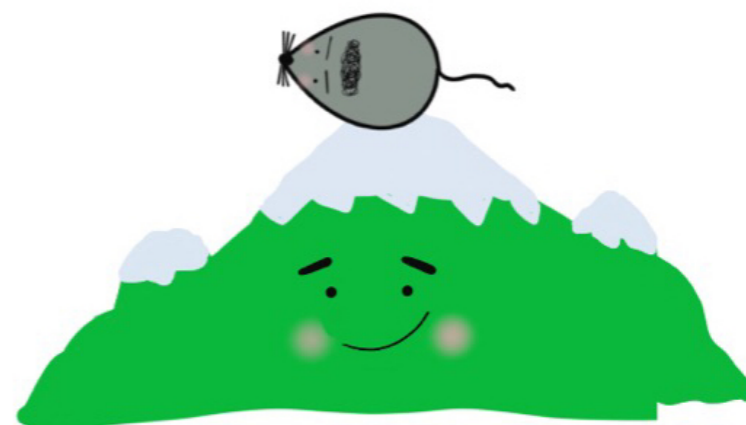
木<sup>口、爿</sup>上<sup>尸、尤</sup>  
mù shàng



石<sup>尸、广</sup>上<sup>尸、尤</sup>  
shí shàng



水<sup>尸、氵</sup>上<sup>尸、尤</sup>  
shuǐ shàng



土<sup>去、土</sup>上<sup>尸、尤</sup>  
tǔ shàng

